

# Shear Nut

Taiwan: M 482660  
USA: D796,947 S  
German: GERMAN UTILITY MODEL NO. 20 2014 008 374  
China: CHINESE UTILITY MODEL NO. ZL 201420590456.3



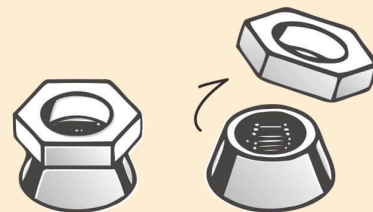
## Smart Quick Security

- ★ metal sheet assembling
- ★ frame or shelf fixing
- ★ anti-theft & easily install
- ★ wide application on agriculture \ engineering automobile \ Infrastructure Field

## Shear Nut Share great performance!



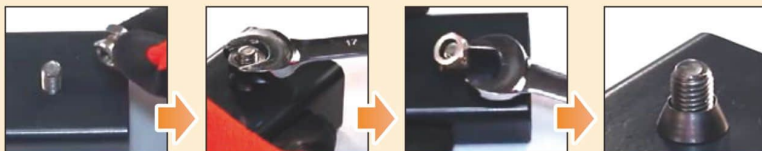
Various Options of design



Before

After

### How to Install?



### How the shear nut work?

Using Hex Wrench match on the top hex head of shear nut, turning the hex head tightly till it break out!

The bottom half of nut, the dome shape fasten upon with the bolt can't been broken off, keep any tool slip away, get anti-theft benefit for property security!

#### (1) Anti-theft Design:

Once fasten up! Any pilers or hand tool can't grasp it but just slip off!!  
Best design of anti-theft, to secure the property safety!

### Material:

Carbon steel, Stainless steel,  
Aluminum, Alloy, brass/bronze

Main Spec available as below

	SPEC	BREAK TORQUE
1/2-13	A/F 0.875 x 0.52H	20~40 lb-ft
5/16-18	A/F 0.625 x 0.52H	15~40 lb-ft
M6-1.0	A/F 10 x 9H	6~15 lb-ft
M8-1.25	A/F 13 x 12H	10~20 lb-ft
M10-1.5	A/F 17 x 15H	20~30 lb-ft
M12-1.75	A/F 19 x 15H	30~45 lb-ft

Customized-oriented spec is available!!

# Special Part by cold forming

Material : Steel 、 Stainless 、 Alloy 、 Brass 、 Aluminum

Spec : customized design & production



## ■ Bolt (External Thread)



## ■ Nut (Internal Thread)





# Special Part by cold forming

Material : Steel 、 Stainless 、 Alloy 、 Brass 、 Aluminum

Spec : customized design & production

## Nylon Nut



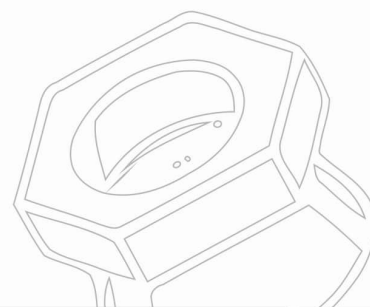
## T-Nut



## Special Nut



## Weld Nut



## Rivet Nut

